

St. Claire HomeCare

Home Health • Hospice • Home Medical Equipment
A service of St. Claire Regional Medical Center



About St. Claire HomeCare

St. Claire HomeCare is a service provided by St. Claire Regional Medical Center offering a full range of home care services for patients to recover in their own homes. As one of the largest programs in the state, St. Claire HomeCare is a comprehensive in-home service system comprised of home health, hospice, and home medical equipment. Our committed staff includes nurses, therapists and aides working as a team to help meet virtually every home care need.

The Joint Commission on the Accreditation of Healthcare Organizations (JCAHO) accredits both St. Claire Regional Medical Center and St. Claire HomeCare. St. Claire HomeCare is Medicare-certified and licensed in the state of Kentucky.

Services

Home Health

Home Health provides quality care in the comfort of one's home. Upon referral from a physician, extensive in-home services are provided on a short or long term basis to qualified patients.

Our home health staff provide various services including nursing and home health aide services, newborn and postnatal assessments, mental health, nutrition counseling, medical social services, physical, occupational and speech therapy, home and community based waiver services, model waiver II and respite care.

Home Infusion Therapy

Home infusion therapy is the "out-of-hospital" management of diseases or disorders that require intravenous (I.V.) administration of therapeutic agents. St. Claire HomeCare's home I.V. therapy service, Infusion Solutions, utilizes state-of-the-art pharmacies to provide a higher degree of quality control, quicker service and more individualized planning.

Hospice

St. Claire Hospice is a program offering support and compassionate care for persons in the last phase of incurable disease. Using an interdisciplinary team of health care professionals and trained volunteers, St. Claire Hospice provides pain-management, symptom control, psychosocial support, and spiritual care to patients, and their families. The patient and family are central in all decision making, distinguishing hospice from ordinary homecare.

The Interdisciplinary Team, consisting of physicians, nurses, aides, social workers, spiritual caregivers, counselors, therapists, and trained volunteers, provides pain and symptom management for the patient and support for the family. The patient's personal physician directs the medical hospice plan of care implemented in the home by the Hospice Interdisciplinary Team.

Palliative Care

The Palliative Care program provides family-centered care to those with life-limiting illness who are experiencing uncontrolled symptoms. The Palliative Care Team, consisting of a palliative medicine physician, social worker, nurse and chaplain, provides aggressive symptom management, not excluding surgical or medical interventions, supportive care and education to assist patients and their families.

Home Medical Equipment

St. Claire HomeCare offers the ability to rent or purchase a wide range of professional medical equipment and supplies, such as hospital beds, walkers, wheelchairs, bedside commodes, oxygen equipment, CPAP, BiPAP and Auto CPAP, for qualified patients with a physician's prescription. Our service vehicles deliver equipment Monday through Friday from 8:00 a.m. to 4:30 p.m.

St. Claire HomeCare

A service of St. Claire Regional Medical Center

Office Locations

Main Office - Rowan/Bath/Menifee Counties

Morehead, KY (606) 784-8403

Carter County

Olive Hill, KY (606) 286-6847

Elliott County

Sandy Hook, KY (606) 738-5404

Fleming County

Flemingsburg, KY (606) 845-0616

Lewis County

Vanceburg, KY (606) 796-6913

Montgomery County

Mt. Sterling, KY (859) 498-4587

Home Health Rehab Services

Morehead, KY (606) 780-0435

Hospice

Morehead, KY (606) 784-6086

Palliative Care

Morehead, KY (606) 783-6804

Home Medical Equipment

Morehead, KY (606) 784-6747

Infusion Solutions

Ashland, KY (606) 325-1115 (888) 446-6348

Referrals

Just about anyone can refer you to St. Claire HomeCare - your doctor, family and friends, even you can refer yourself. Insurance companies, nursing homes, hospitals and rehab units may also refer you. For skilled services, though, a physician referral is required.

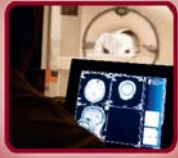
Convenience

St. Claire HomeCare operates eight offices conveniently located throughout our eight-county service area. Office hours are Monday through Friday from 8:00 a.m. to 4:30 p.m.

St. Claire HomeCare is available 24 hours a day, 7 days a week, for admissions, consultants, IV therapy, emergencies, and scheduling home health visits. Call **(606) 783-6500** or **(800) 264-0616** and ask for the Home Health or Hospice nurse on call.



St. Claire Regional Medical Center



About St. Claire Regional Medical Center

St. Claire Regional Medical Center serves as a 159-bed regional referral center and the largest rural hospital in northeastern Kentucky. Founded in 1963, the medical center has grown to a modern health care facility of over 222,000 square feet. As a regional referral center, St. Claire Regional receives referrals from other providers for many complex medical and surgical illnesses of adults and children.

With nearly 1,300 employees, St. Claire Regional is the second-largest employer in the region. St. Claire Regional's medical staff is comprised of over 100 physicians and surgeons, representing 31 medical and surgical specialties. The medical center serves as an established training site for the University of Kentucky College of Medicine's physician residency programs.

In addition to providing services at the Medical Center's main campus in Morehead, St. Claire Regional's operations consist of a new St. Claire Regional Outpatient Center, Cave Run Surgical Specialists, five comprehensive family medicine centers, as well as a family medicine express, a regional telemedicine system, and home care services comprised of home health, hospice, and home medical equipment. St. Claire Regional also partners with the University of Kentucky Medical Center to offer services through the UK Kentucky Clinic Morehead Cancer Treatment Center.

Sponsored by the Sisters of Notre Dame in Covington, Kentucky, St. Claire Regional serves as a not-for-profit hospital and is accredited by the Joint Commission on the Accreditation of Healthcare Organizations.

St. Claire Regional Medical Center's service area covers Bath, Carter, Elliott, Fleming, Lewis, Magoffin, Menifee, Montgomery, Morgan, Rowan, and Wolfe counties.

Procedures & Services

St. Claire Regional offers a wide array of technologically advanced diagnostic and treatment options. We are proud to offer the following procedures and services to the communities we serve:

- Anesthesia** - General, Regional, Epidural, Pain Management
- Cancer Services** - Chemotherapy, Radiation & Surgical Oncology
- Cardiology Services** - Cardiac Catheterization, Cardiac Imaging, Coronary CT Angiography, Echocardiography, Electrophysiology, Nuclear Cardiology
- Dentistry**
- Dermatology**
- Diabetes Care & Education**
- Diagnostic Imaging** - MRI, CT Scan, Mammography, Nuclear Medicine, Ultrasound (3-D)
- Emergency Care**
- Endocrinology**
- Endoscopy/Special Procedures** - Colonoscopy, Bronchoscopy, Upper Endoscopy
- Exercise/Fitness**
- Family Medicine**
- Gastroenterology**
- Hematology**
- Home Health Services** - Home Health, Home Medical Equipment, Hospice, Palliative Care, Rehab Services
- Hospitalist Physician Services**

- Intensive Care Unit**
- Internal Medicine**
- Kyphoplasty**
- Laparoscopic Services**
- Mental Health Services**
 - Counseling
 - Psychiatry (Inpatient & Outpatient)
- Nephrology**
- Neurology**
- Nutrition/Weight Management**
- Oral and Maxillofacial Services**
- Orthopedics**
- Otolaryngology**
- Pastoral Care**
- Pathology, Cytology, and Laboratory Services**
- Pediatrics**
- Pharmacy Services**
- Physical Medicine & Rehabilitation**
 - Inpatient & Outpatient Rehab Services,
 - Cardiac Rehab, Occupational Therapy,
 - Pulmonary Rehab, Physical Therapy,
 - Speech Therapy
- Podiatry**
- Pulmonology**
- Respiratory Diagnostics & Treatment**
- Sleep Medicine & Diagnostic Sleep Lab**
- Social Services**
- Surgery** - General, Laparoscopic, Obstetrical & Gynecological, Oral & Maxillofacial, Orthopedic, Otolaryngological, Thoracic, Urological, Vascular
- Telemedicine**
- Urology**
- Volunteer Services**
- Women's Care** - Childbirth Education, Labor and Delivery, Mammography, Obstetrics and Gynecology, Perinatal Care, Stereotactic Breast Biopsy
- Wound Care**

Amazing. Medicine. Close to Home.