

St. Claire Regional OUTPATIENT CENTER

A service of St. Claire Regional Medical Center



About St. Claire Regional Outpatient Center

St. Claire Regional Outpatient Center is a new, 13,600 square foot, conveniently located, state-of-the-art facility.

The design of the Outpatient Center provides patients with the opportunity for more personalized attention and parking availability. The facility offers a broad array of procedures and services, including: diagnostic imaging and laboratory services, therapies of neurologic, orthopedic, sport, and work related injuries, sleep lab, wound care clinic and a weight management program.

Our friendly and experienced staff are available to treat patients of all ages, from pediatrics to geriatrics. The Outpatient Center provides the scheduling flexibility to accommodate each patient.

To schedule an appointment, or for more information, please call **606-783-6940**.

Services

Diagnostic Imaging

The Outpatient Center offers routine x-ray imaging services and procedures, including chest x-rays, x-rays of the extremities and spine, and screening mammography.

Computerized Tomography (CT), Magnetic Resonance Imaging (MRI), Ultrasound, Nuclear Medicine, and fluoroscopic procedures are available at the Diagnostic Imaging department at St. Claire Regional Medical Center.

Laboratory Services

Our laboratory services include the collection of outpatient laboratory specimens, occupational drug screening, breath alcohol testing and outpatient EKG's for increased patient convenience.

A physician's order is required for x-ray, mammography and laboratory services. Occupational drug screen collection and breath alcohol testing is coordinated by the company representative.

Rehabilitation Services

We offer a full range of rehabilitation services, such as physical therapy, occupational therapy, speech therapy, and sports rehabilitation, on site at the Outpatient Center. With all three therapies (PT, OT, ST) at the same location, we are better equipped to serve patients of all ages, including pediatrics. Our rehab services also include the availability of a Physical Medicine and Rehabilitation physician.

Physical Therapy

We provide physical therapy services for an array of injuries, impairments and conditions, including those caused by sports, accidents, strokes, wounds, and arthritis, including work-related injuries and industrial rehab.

Our highly trained and experienced professionals remain in close consultation with the patient's physician to provide a structured and personalized rehabilitation program.

Occupational Therapy

We provide occupational therapy services for the treatment of patients with hand and upper extremity injuries, neurological disorders and physical disabilities, including traumatic injuries and carpal tunnel syndrome.

Occupational therapists work closely with each patient, the health care team, family members and community resources to help each patient develop their functional capability to the fullest extent possible.

Speech Therapy

Our speech therapy program offers evaluation and therapy for children and adults with speech, language, feeding/swallowing, oral motor, voice, and hearing problems. Our speech-language pathologists assess each patient's individual needs and work with their families, physicians and other specialists to develop a personalized treatment plan.

Sports Rehabilitation

A multidisciplinary team of professionals are able to provide treatment for a broad array of athletic and recreational related injuries sustained by all ages. Our team will create a

Quick Reference

- **Diagnostic Imaging**
(X-ray/Mammography)
- **Laboratory Services**
(EKG's/Occup. Drug Screening)
- **Rehabilitation Services**
(PT, OT, ST, Sports Rehab)
- **Sleep Laboratory**
- **Weight Management**
- **Wound Care**

personalized exercise and rehabilitation program to build strength, increase mobility and prevent future injury.

Sleep Laboratory

The sleep laboratory is equipped with the latest technologies to diagnose and treat sleep disorders. Our staff are specially trained registered polysomnographic technologists who are all licensed respiratory care practitioners. An overnight sleep study is conducted in one of our bedroom suites to pinpoint the cause of the sleep disturbance.

Our sleep laboratory focuses on sleep related breathing disorders, such as excessive snoring and sleep apnea. We also treat and diagnose a full range of sleep disorders, such as narcolepsy, restless leg syndrome, REM behavior disorders, and insomnia.

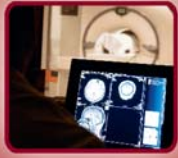
Weight Management

The weight management program provides a comprehensive, medically supervised treatment plan to create behavioral lifestyle changes to ensure successful, long-term, healthy weight loss. The program is designed for mild, moderate and severely overweight adults. Specialized programs are also available for adolescents and diabetics.

Wound Care

SCR's wound care clinic offers thorough wound care assessments by a highly trained medical team which includes a physician, wound care certified nurse, physical therapist, dietician and diabetes educator. SCR's wound care clinic provides comprehensive outpatient care for chronic wounds and is conveniently located in the Outpatient Center.

St. Claire Regional Medical Center



About St. Claire Regional Medical Center

St. Claire Regional Medical Center serves as a 159-bed regional referral center and the largest rural hospital in northeastern Kentucky. Founded in 1963, the medical center has grown to a modern health care facility of over 222,000 square feet. As a regional referral center, St. Claire Regional receives referrals from other providers for many complex medical and surgical illnesses of adults and children.

With nearly 1,300 employees, St. Claire Regional is the second-largest employer in the region. St. Claire Regional's medical staff is comprised of over 100 physicians and surgeons, representing 31 medical and surgical specialties. The medical center serves as an established training site for the University of Kentucky College of Medicine's physician residency programs.

In addition to providing services at the Medical Center's main campus in Morehead, St. Claire Regional's operations consist of a new St. Claire Regional Outpatient Center, Cave Run Surgical Specialists, five comprehensive family medicine centers, as well as a family medicine express, a regional telemedicine system, and home care services comprised of home health, hospice, and home medical equipment. St. Claire Regional also partners with the University of Kentucky Medical Center to offer services through the UK Kentucky Clinic Morehead Cancer Treatment Center.

Sponsored by the Sisters of Notre Dame in Covington, Kentucky, St. Claire Regional serves as a not-for-profit hospital and is accredited by the Joint Commission on the Accreditation of Healthcare Organizations.

St. Claire Regional Medical Center's service area covers Bath, Carter, Elliott, Fleming, Lewis, Magoffin, Menifee, Montgomery, Morgan, Rowan, and Wolfe counties.

Procedures & Services

St. Claire Regional offers a wide array of technologically advanced diagnostic and treatment options. We are proud to offer the following procedures and services to the communities we serve:

- Anesthesia** - General, Regional, Epidural, Pain Management
- Cancer Services** - Chemotherapy, Radiation & Surgical Oncology
- Cardiology Services** - Cardiac Catheterization, Cardiac Imaging, Coronary CT Angiography, Echocardiography, Electrophysiology, Nuclear Cardiology
- Dentistry**
- Dermatology**
- Diabetes Care & Education**
- Diagnostic Imaging** - MRI, CT Scan, Mammography, Nuclear Medicine, Ultrasound (3-D)
- Emergency Care**
- Endocrinology**
- Endoscopy/Special Procedures** - Colonoscopy, Bronchoscopy, Upper Endoscopy
- Exercise/Fitness**
- Family Medicine**
- Gastroenterology**
- Hematology**
- Home Health Services** - Home Health, Home Medical Equipment, Hospice, Palliative Care, Rehab Services
- Hospitalist Physician Services**

- Intensive Care Unit**
- Internal Medicine**
- Kyphoplasty**
- Laparoscopic Services**
- Mental Health Services**
 - Counseling
 - Psychiatry (Inpatient & Outpatient)
- Nephrology**
- Neurology**
- Nutrition/Weight Management**
- Oral and Maxillofacial Services**
- Orthopedics**
- Otolaryngology**
- Pastoral Care**
- Pathology, Cytology, and Laboratory Services**
- Pediatrics**
- Pharmacy Services**
- Physical Medicine & Rehabilitation**
 - Inpatient & Outpatient Rehab Services,
 - Cardiac Rehab, Occupational Therapy,
 - Pulmonary Rehab, Physical Therapy,
 - Speech Therapy
- Podiatry**
- Pulmonology**
- Respiratory Diagnostics & Treatment**
- Sleep Medicine & Diagnostic Sleep Lab**
- Social Services**
- Surgery** - General, Laparoscopic, Obstetrical & Gynecological, Oral & Maxillofacial, Orthopedic, Otolaryngological, Thoracic, Urological, Vascular
- Telemedicine**
- Urology**
- Volunteer Services**
- Women's Care** - Childbirth Education, Labor and Delivery, Mammography, Obstetrics and Gynecology, Perinatal Care, Stereotactic Breast Biopsy
- Wound Care**

Amazing. Medicine.
Close to Home.